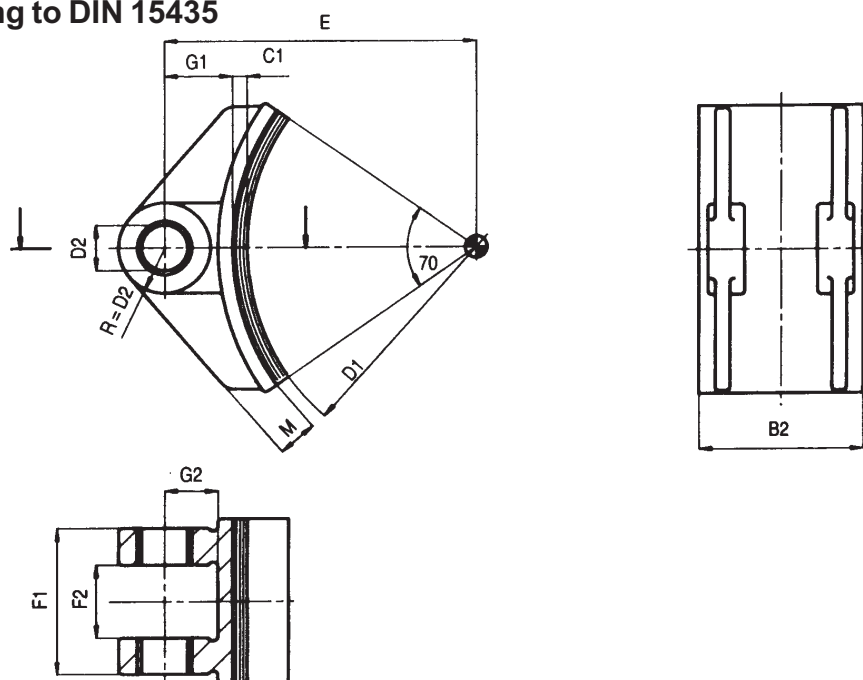


Brake shoes and Brake linings

according to DIN 15435



Dimensions in mm

All data subject to change without notice

Brake drum Ø D 1	B 2	C 1	D 2 D 10	E	F 1 - 0,2	F 2 + 0,2	G 1	G 2	M max.	weight app. [kg]	
										without Brake lining	with
200	70	8	20	140	65	35	32	24	17	0,5	0,7
250	90	8	25	170	80	40	37	29	22	0,7	1,0
315	110	10	30	212	100	50	44,5	34,5	25	1,5	2,1
400	140	10	35	260	125	62	50	40	30	2,2	3,1
500	180	12	40	320	160	80	58	46	33	4,0	6,0
630	225	12	45	390	200	100	63	51	38	6,0	8,9
710	255	15	50	440	224	112	70	56	40	8,5	12,8

Brake shoes without lining:

Form A1C: Brake shoe made from cast aluminium with steel bushes, for bonding the brake linings (standard version)

- Brake shoes with other brake lining qualities are available on request

Form A2C: Brake shoe made from cast aluminium with steel bushes and rivet holes for riveting the brake lining

- Brake lining data sheet available on request

Brake shoes with lining:

Version 1: Brake shoe form A1C with bonded brake lining

Version 2: Brake shoe form A2C with riveted brake lining

Version 3: Brake shoe form A2C with bonded and riveted brake lining

Order example:

10 pieces brake shoes 400 DIN 15435 with brake lining type COSID 466

edition 9/2002



SHB Saalfelder
Hebezeugbau GmbH
Unternehmensbereich Komponenten

Telephone: (0049) 3671) 44 1341

44 1342

Fax: (0049) 3671 44 1343

E-mail: komponenten@shb-net.de